

800 MHz Stainless Steel Yagi Antennas

540-1000 MHz

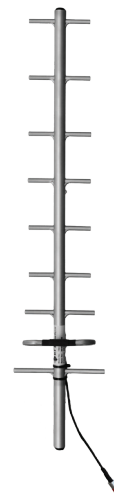
YBS809 Series



The stainless steel YBS809 series yagis are high gain Low PIM antennas specifically designed to cater for extreme and corrosive environments. They provide an excellent solution for point to point applications in RF control, short or long haul link, point to multipoint and other applications requiring highly directional antennas.

Manufactured from all welded 316 grade stainless steel these antennas provide identical performance to the YB809 series yagis but are better suited for extreme climatic or corrosive applications.

Termination is via an N female connector fitted to a short 9302 Durathene cable tail. Durathene is a PTFE dielectric and polyethylene jacketed cable providing superior resistance to weathering and abrasion and is less susceptible to bird attack than standard PVC sheathed cables.



Features:

- Rugged construction 316 grade stainless steel for extreme conditions
- Broadband available in a number of models to cover trunking, cellular and ISM bands
- Narrow beamwidth and high front to back ratios
- Can be configured in stacks or bays for higher gain applications using PH and PHE series phasing harnesses
- Ideal for point to point or point to multipoint applications
- DC grounding on all elements for the ultimate in lightning protection and dissipation of static noise
- -150dBc Passive Intermodulation (PIM) rated

Electrical

Model Number	YBS809-81	YBS809-82	YBS809-94	YBS809-99
Nominal Gain <i>dBi (dBd)</i>	12 (10)		13 (11)	
Frequency <i>MHz</i>	806 - 896	850 - 930	890 - 960	540 - 1000
Tuned Bandwidth	Full band			5.0%
VSWR (Return Loss)	<1.5 :1 (14dB)			
Nominal Impedance Ω	50			
Vertical Beamwidth $^{\circ}$	43		41	44
Horizontal Beamwidth $^{\circ}$	49	49	48	51
Front / Back Ratio <i>dB</i>	16	18	15	16
Input Power <i>W</i>	100			
Passive IM 3rd order <i>dBc</i>	-150			

Mechanical

Model Number	YBS809-81	YBS809-82	YBS809-94	YBS809-99
Construction	All welded stainless steel with polished finish			
Length <i>m</i>	0.9		1.0	1.4
Weight <i>kg</i>	1.0			1.6
Termination	N female with short 9302 cable tail			
Mounting Area	100mm of 25mm diam. stainless steel			
Suggested Clamps	1 x UCR1			
Projected Area <i>cm²</i>	No ice	358	341	370
	With ice	874	838	870
Wind Load (Thrust) @ 160km/h <i>N</i>	42	40	44	70
Wind Gust Rating <i>km/h</i>	240			
Torque @160 km/h <i>Nm</i>	15	13	16	40