

# Expansion Multicoupler

## 60-960MHz

### Broad Band 8-Way Expansion Multicoupler.

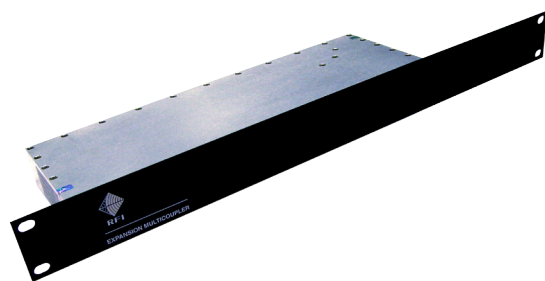
RX0696-3008-31



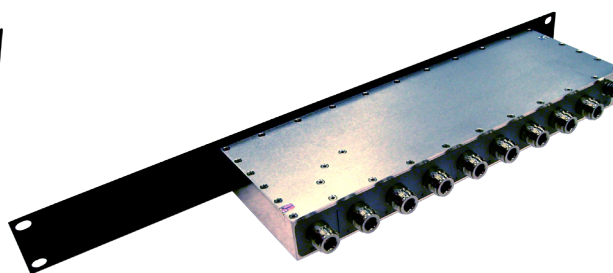
The RX0696-3008-31 is a broadband expansion multicoupler primarily used to expand the port capability of any of the RFI banded receiver multicouplers. This expansion multicoupler is a passive 1 in 8-way out device mounted onto a 1RU 19" rack front panel. Expansion configurations are detailed in our Receiver Multicoupler Application Note.

#### Features:

- Facilitates port expansion of receiver multicouplers
- Compatible for use with RFI VHF, UHF and 7/8/900MHz receiver multicouplers
- Used for both analogue and digital technologies
- Easy retro-fittable expansion
- 1RU 19" rack mountable
- BNC Female termination connector option available



FRONT VIEW



REAR VIEW

#### Specifications

Model Number	RX0696-3008-31
Frequency range	60-960MHz
Insertion Loss: RF Outputs 1-8	10.5 ± 0.5dB
Insertion Loss variation with temperature	± 0.2dB
Impedance	50 Ω
Input return loss	> 14dB
Output return loss	> 14dB
Isolation between ports	> 20dB
Maximum input level	+24dBm
RF termination connectors	N (F) Optional BNC (F)
Operating temperature range	-30° to +60° C / -22° to +140° F
Earthing	M6 earthing stud
Mounting	1RU 19" rack mount
Dimensions	483x117x44mm / 19x4.6x1.75" (incl conn)
Weight	1.3kg / 2.86 lbs

Note 1. Supplied with 1 x N (M) to N (M) RG142 jumper cable

Ordering information	
Model Number	Description
RX0696-3008-31	Broad Band 60-960MHz Expansion Multicoupler 8-way N (F)
RX0696-3008-31B	Broad Band 60-960MHz Expansion Multicoupler 8-way BNC (F)