

SERVICE BULLETIN ASM-001

Product: Antenna System Monitor

Subject: Firmware 1.9 Release

Description

This Service Bulletin announces the release of baseline 1.9 firmware for the Antenna System Monitor (ASM) series products.

The version 1.9 firmware update file (“FPP”) is available for download from the RFI website, and it may be flashed into existing ASM models by following the *Maintenance – Firmware Update* process in the Graphical User Interface (GUI) or User Manual.

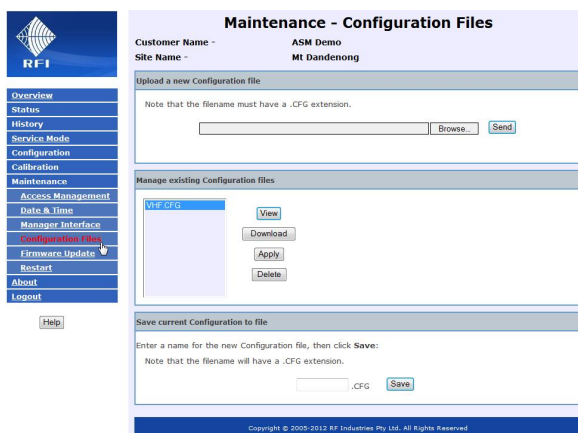
Product Enhancement

The version 1.9 firmware provides the following new features for the ASM;

- i) Configuration File Load / Save

This feature provides the ability to load/save a unit’s configuration from/to a nominated computer drive location.

An ASM configuration may now be created prior to the unit’s installation (i.e. by a network engineer) and simplifies the time and effort required for installation personnel to program an ASM on-site. A previously created configuration may now be quickly and easily uploaded to the ASM, rather than the unit being manually programmed through the Graphical User Interface (GUI).



In network deployments of multiple ASMs, a “template” file can be easily edited and saved by site name (or another identifier), allowing site-specific information to be conveniently configured and saved prior to the commencement of site installations.

The configuration file is structured as a comma delimited raw text file (i.e. CSV) format that can be imported and edited using a text editor, spreadsheet or any other program capable of handling CSV files.

ii) Data Logging overflow in K1 models

In K1 model variants (identified by one USB and one LAN port on the rear), the ability to connect to the unit may be suspended when logged data fills the allocated data storage memory space. This issue has been rectified by this firmware release.

It is recommended that all K1 model users using firmware prior to this release upgrade their units with version 1.9 at the first available opportunity to ensure this problem does not exhibit itself if their units' stored data reaches the available memory limit.

Other Enhancements

Firmware version 1.9 also addresses other identified issues including;

- iii) The GUI login process would not accept certain specific character combinations in the Username and Password fields.
- iv) Channel Alarm Module (CAM) channel information could be incorrectly displayed under certain circumstances.
- v) Modifying the Manager IP address via the GUI required a "Restart" for the changes to take effect. A "Restart" is no longer required.
- vi) Several other non-impacting spelling and layout errors have been corrected.

Compatibilities

Firmware version 1.9 for the ASM is compatible with all models of the ASM1317, ASM3852, ASM7487 and ASM8796. Due to hardware architecture differences, only a K2 model variant (identified by two LAN ports on the rear) will provide access to the Configuration Files feature. In K1 model variants (identified by one USB and one LAN port on the rear) this feature will not appear, but all other enhancements provided by this firmware version will function.

Cost Impact

Firmware version 1.9 is available to RFI customers at no charge.

- END -