

ELITE



PRO



CLASSIC



# Programming Parameters

- Feature Comparison : Rev 1

## How to use Programmer:

### Start Programming application

Runs On PC or Mac running Windows 7/8.

To put Handset into programming mode, attach programming cable between device Hirose port and PC then start handset while holding PTT. LED will light pink.

To put Gateway into programming mode, firstly hold the Gateway ON/OFF button before attaching programming cable to device Mini-USB port and PC USB port before. LED will light pink. (The gateway's RJ45 socket should not be connected.)

Always READ device first.

### Read Device

Press to load current programming parameters from device to screen.

### Program Device

Press to load current screen programming parameters to device.

### Load File

Press to load a previously saved programming parameters to device from its saved PC location.



### Save File

Press to load a programming parameters from screen to desired PC location saved location.

### Defaults

Press to load screen with default device parameters.

### Exit

Press to exit program.

### Restart (*important*)

Press to restart programmed device before removing programming cable

# Handset Parameters

**ELITE**



**PRO**



**CLASSIC**





## Programming Feature: Basic functions - Handset

### Radio PTT key beep

Sounds talk permit tone sequence whenever PTT is pressed and handset is in range of its gateway. **Default - OFF**

### Emergency key beep

Sounds single tone whenever Emergency button is pressed and handset is in range of its gateway. **Default - ON**

### Talkaround PTT key beep

Sounds talkaround tone sequence whenever Talkaround button is pressed and handset is in range of its gateway. **Default - ON**

### Stealth mode always active

Disables all alert tones and LED status light. User can manually enable stealth mode if programmed off. **Default - ON**

### Mute speaker on PTT

Disables all speaker audio whenever PTT is pressed. **Default - OFF**

### Mute speaker on charge

Disables all speaker audio whenever handset is placed in gateway of charger. **Default - OFF**

### LED charge indicate

Disables "momentary blink" charge indicate on handset when device is charging whenever handset is placed in gateway or a charger.

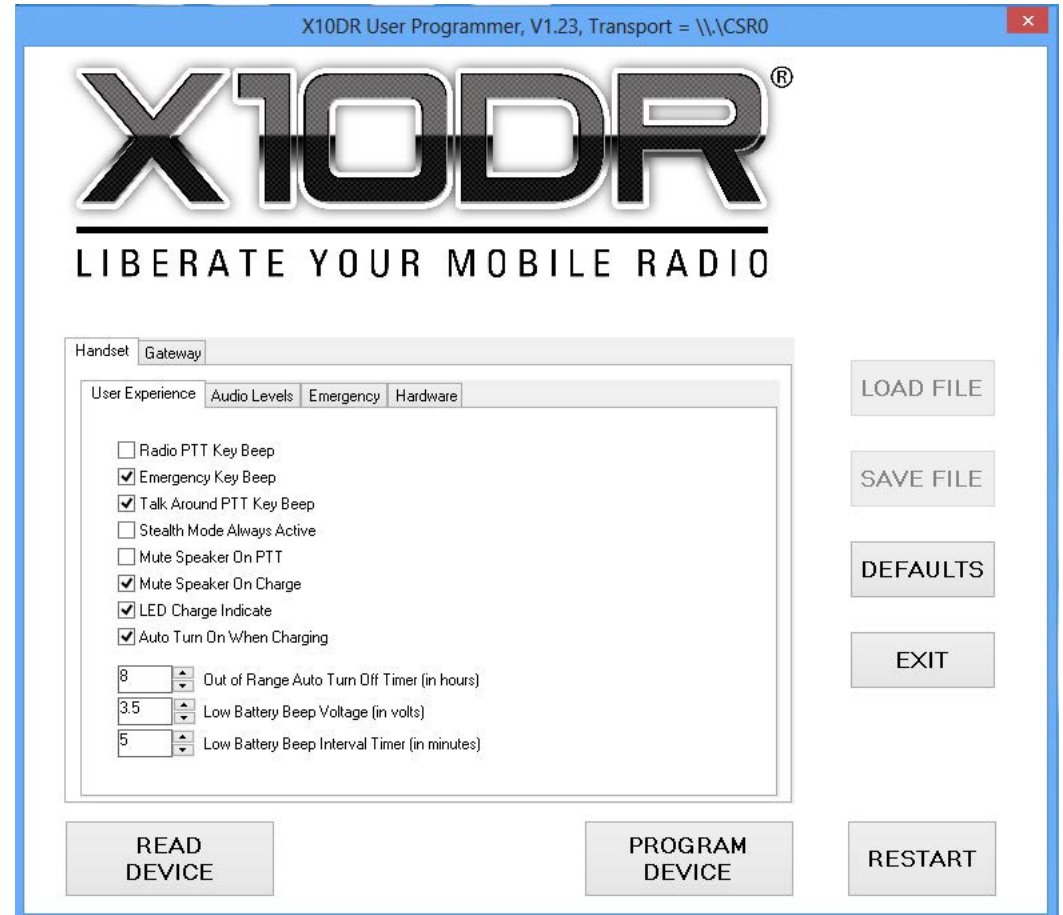
**Default - ON**

### Auto turn on when charging

Causes handset to automatically turn on whenever it is placed in gateway or a charger. **Default - ON**

### Out of range turn off time

Sets time in hours that a handset that is not actively connected to a gateway will remain powered on before turning itself off. **Default - 8 hours**



### Low battery beep voltage

Sets the remaining battery voltage that will cause the low battery alert tones to be generated. (for longer shift life you may set voltage lower but you may get less warning before device automatically shuts off. **Default 3.5V**

### Low battery beep interval timer

Sets the interval that the low battery alert tones are sounded in the handset.

**Default 5 minutes**



## Programming Feature: Audio Levels - Handset

### Internal Mic Gain

Sets the internal microphone's transmit audio level. **Default 0**

### Internal Mic High Gain Boost

Sets the internal microphone's sensitivity when "Live Mic" is active

### External Mic Gain

Sets the external microphone's transmit audio level. **Default 0**

### External Mic High Gain Boost

Sets the external microphone's sensitivity when the X10DR's "Live Mic" is active or when user manually selects high gain by powering up microphone with blue volume up button pressed. **Default 6**

### Remote PTT Gain Boost

Remote PTT gain Boost

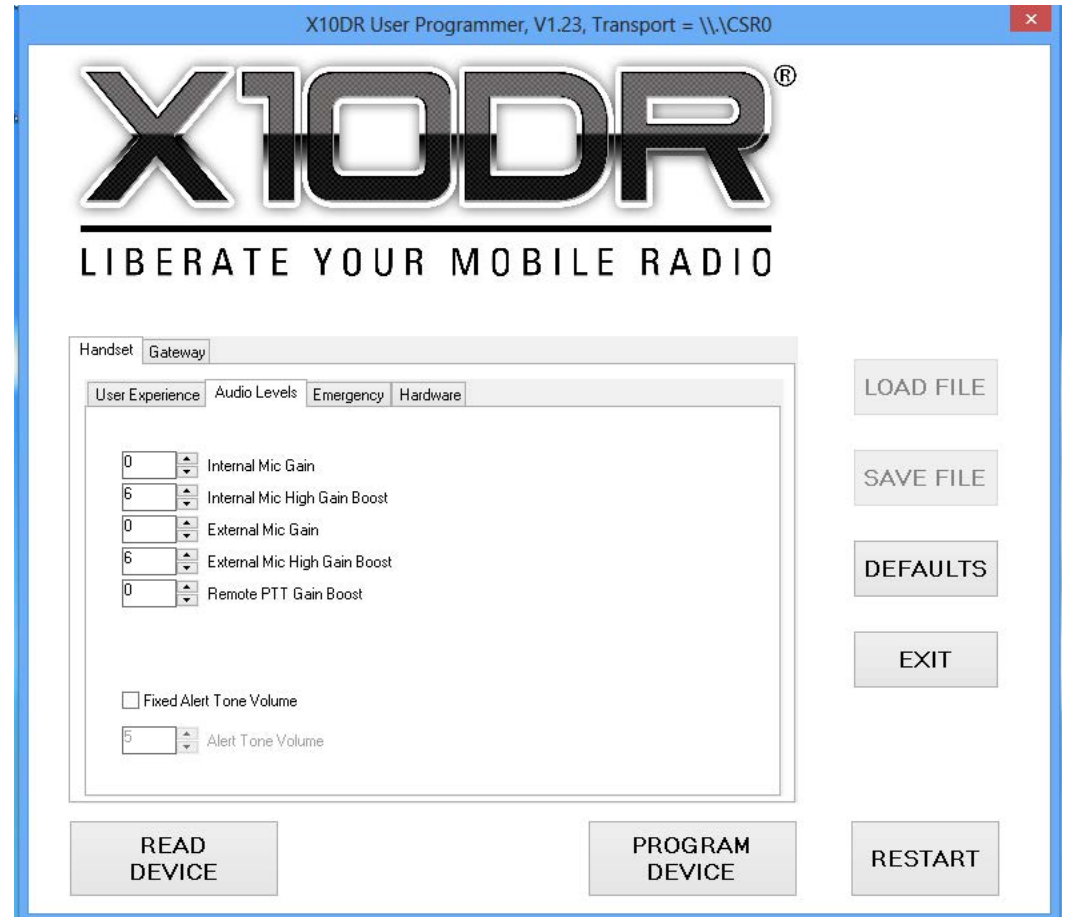
Increases sensitivity of internal microphone when remote/handlebar PTT is pressed. **Default 9**

### Fixed Alert Tone Volume

Limits all user monitored alert tones to level set below rather than being controlled by handset volume controls. **Default OFF**

### Alert Tone Volume

Sets the value of the "Fixed Alert Tone" a user will hear from their handset. **Default 5**



## Programming Feature: Emergency - Handset

### Audio link active time

- *Applicable when handset is configured for press & hold emergency*  
Sets the time the internal ( or external if accessory is detected) that transmit audio is active after Emergency button is released. Feature is intended for those mobiles that activate their own internal "Live Mic" function whenever emergency is triggered. This allows the microphone's Tx audio to be broadcast over the radio's transmit channel, (assuming mobile can source "Live Mic" from its external mic input). **Default - 0**

### Advanced Emergency - Elite Models only

- *Applicable when Elite handset is configured for short/long press emergency*

### Transmit Time

Sets the time duration that X10DR "Live Mic" handset Tx audio is active when Advanced Emergency activated. **Default - 0**

### Receive Time

Sets the time duration that X10DR "Live Mic" handset Rx audio is active when Advanced Emergency activated. **Default - 0**

### Emergency repeat cycles

Sets the number of "Live Mic", Tx and Rx cycles when Advanced Emergency is triggered. **Default - 1**

The screenshot shows the X10DR User Programmer software window. The title bar reads "X10DR User Programmer, V1.23, Transport = \\.\CSRS0". The main window features the X10DR logo and the tagline "LIBERATE YOUR MOBILE RADIO". Below this, there are tabs for "Handset" and "Gateway", with "Handset" selected. Under the "Handset" tab, there are sub-tabs for "User Experience", "Audio Levels", "Emergency", and "Hardware", with "Emergency" selected. The "Emergency" sub-tab contains the following settings:

- Press and Hold Emergency Function:** A spin box set to "0" with the label "Audio Link Active Time (in second)".
- Short or Long Press Emergency Function:** Three spin boxes: "Transmit Time (in second)" set to "0", "Receive Time (in second)" set to "0", and "Emergency Repeat Cycles" set to "1".
- Transmit Audible Emergency Tone

On the right side of the window, there are buttons for "LOAD FILE", "SAVE FILE", "DEFAULTS", and "EXIT". At the bottom of the window, there are buttons for "READ DEVICE", "PROGRAM DEVICE", and "RESTART".

### Transmit audible emergency tone

Causes an audible emergency warble tone to be transmitted over the host mobile radio channel. **Default Off**

# Programming Feature: Hardware - Handset

## Acc PTT

Sets whether Hirose PTT input generates Talkaround or radio PTT. **Default - Radio PTT**

## PTT

Sets function of main large PTT button. Choices Radio PTT, Talkaround PTT or disabled.

**Default - Radio PTT**

## Top 1

Sets function of top left button. Choices Emergency, Radio PTT, Talkaround PTT or disabled.

**Default - Emergency**

## Top 2

Sets function of top right button. Choices Emergency, Radio PTT, Talkaround PTT or disabled. **Default - Talkaround PTT**

## Left 1

Sets function of top left button.

**Press & Hold** choices Emergency, Radio PTT, Talkaround PTT or disabled.

**Short or Long Press** choices Vol Up, Vol down, Aux 1, Aux 2, Emergency or disabled.

**Short or Long Press - Default - short press Volume up**

## Left 2

Sets function of bottom left button.

**Press & Hold** choices Emergency, Radio PTT, Talkaround PTT, ON/OFF or disabled.

**Short or Long Press** choices Vol Up, Vol down, Aux 1, Aux 2, Emergency or disabled.

**Short or Long Press - Default - short press Volume down**

## Right 1

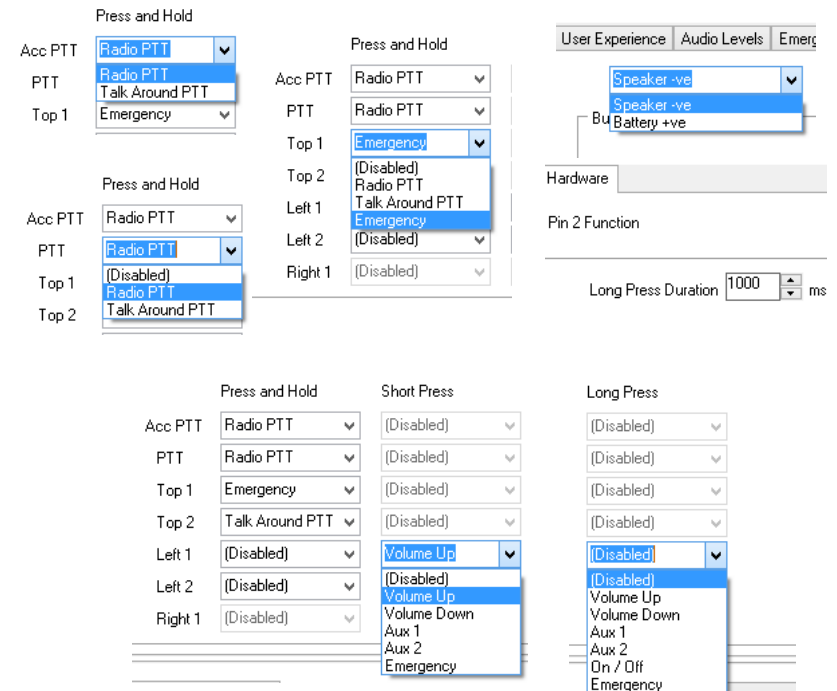
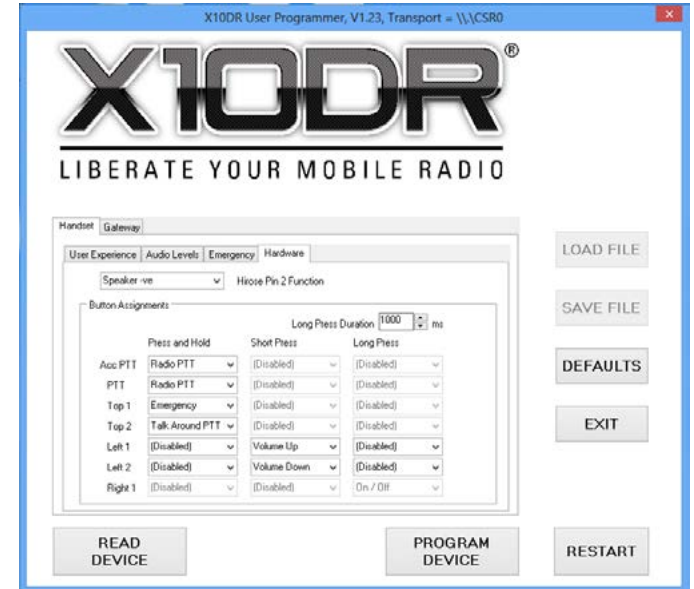
Sets the function of right side button. **Long Press Default - OFF/ON**

## Hirose Pin 2 function - Elite models only

Sets Hirose pin 2 to be either BAT+ (~3.8VDC) to power external accessories or bridged output speaker audio when pin 2 is set for speaker negative. **Default - Speaker VE-**

## Long Press Duration

Sets time button must be pressed to detect a Long Press. **Default - 1000mSec**



# Gateway Parameters



**ELITE**



**PRO**



**CLASSIC**





## Programming Feature: Audio Levels - Gateway

### Receiver Input Gain From Radio

Sets the receive input sensitivity. **Default - 6**

### Transmit Output Gain To Radio

Sets the audio output level to radio when "Live Mic" is active or when local/remote /handlebar PTT is pressed. **Default - 0**

### Talk Around Output Gain to other X10DRs

Sets the "intercom" microphone audio level. **Default - 6**

### Monitor Emergency Input Alert Tone - Elite Models Only

Causes Emergency warble alert tone to sound in other cross connected X10DR handsets when emergency input is triggered. (Maybe from another X10DR or externally supplied input). **Default - OFF**

### Find Me™ Function

Enables Find Me function in gateway. User double presses gateway On/Off button to trigger Find Me alert tones. **Default - OFF**

### Dual Operational Mics - Elite Models Only

Allows two Elite Mics to be simultaneously operational through the one Elite gateway unit. **Default - OFF**

### Public Address Mode - Elite Models Only

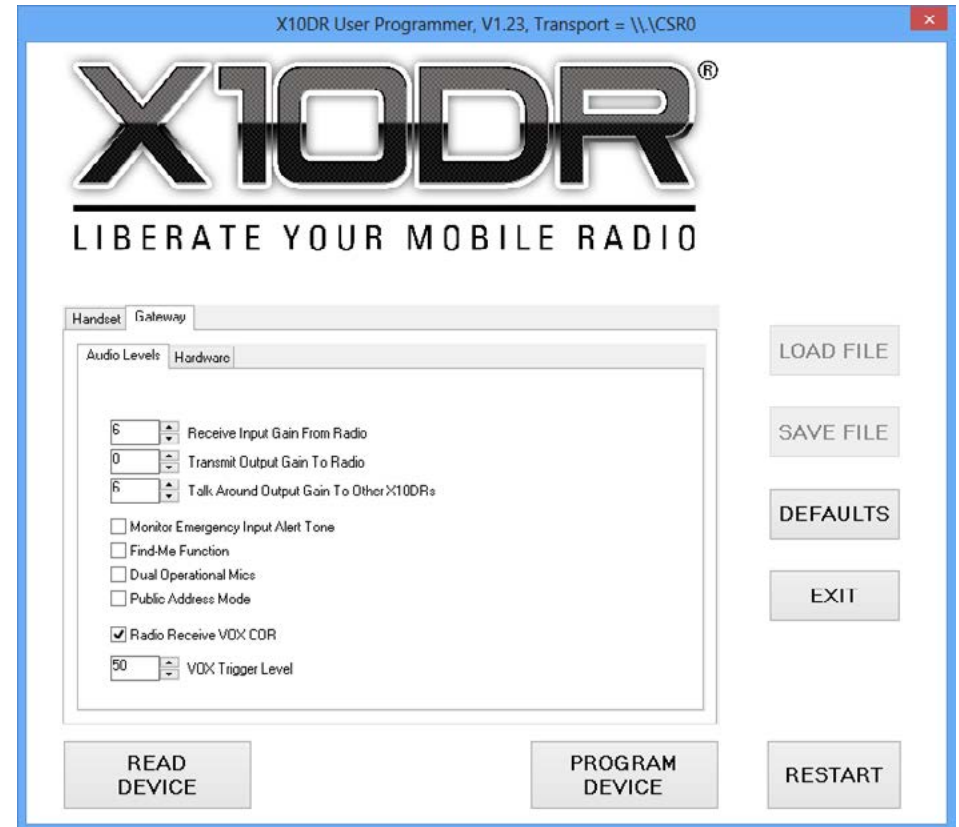
Sets the gateway so only handset Talkaround audio is amplified to the 8 watt audio amplifier. When unchecked both Radio PTT and Talkaround audio is amplified for in-car monitor use. **Default - OFF**

### Radio Receive VOX/COR

Enables VOX derived COR. **Default - ON**

### VOX Trigger Level

Sets the gateway's audio detect sensitivity for VOX derived COR. **Default - 50**



# Programming Feature: Hardware - Gateway

## I/O

Defines whether the specific gateway interface pin is assigned as an input or an output.

## Active

Sets whether the interface pin needs to be held low or pulled up high to activate assigned functionality.

Choices for Output are:

Emergency, Radio PTT, Talkaround PTT and disabled.

**Elite gateways also allow Aux 1, Aux 2, Handset in Cradle indicate, Handset out of range indicate to be selected.**

Choices for inputs:

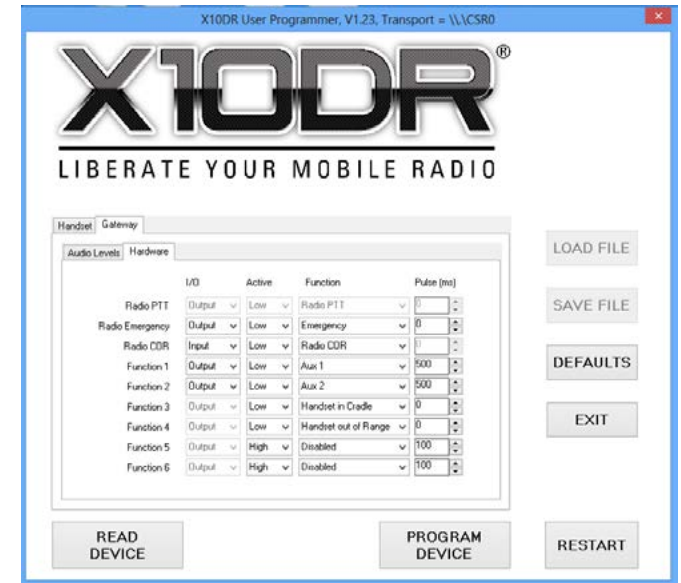
Radio COR, Remote PTT, Find Me™ external trigger and disabled

## Functions

Assigns desired functionality to Interface pin

## Pulse

Defines the length of time an input must be activated before the function is triggered or alternatively how long an output is activated when the assigned function has been triggered. A value of zero means an input triggers instantly.



	I/O	Active	Function	Pulse (ms)
Radio PTT	Output	Low	Radio PTT	0
Radio Emergency	Output	Low	Emergency	0
Radio COR	Input	Low	Disabled	0
Function 1	Output	Low	Emergency	500
Function 2	Output	Low	Talk around	500
Function 3	Output	Low	Aux 1	0
Function 4	Output	Low	Aux 2	0
Function 5	Output	High	Handset in Cradle	100
Function 6	Output	High	Handset out of Range	100

	I/O	Active	Function	Pulse (ms)
Radio PTT	Output	Low	Radio PTT	0
Radio Emergency	Output	Low	Emergency	0
Radio COR	Input	Low	Radio COR	0
Function 1	Output	Low	Disabled	500
Function 2	Output	Low	Radio COR	500
Function 3	Output	Low	Remote PTT	0
Function 4	Output	Low	Find Me	0
Function 5	Output	High	Handset in Cradle	100
Function 6	Output	High	Handset out of Range	100